



H A P P Y  
**EASTER**



14.5-15 Oz. Assorted  
Corn, Peas Or Green Beans  
**Libby's  
Vegetables**

**4/\$5**



30-Oz. Jar  
**Kraft Real  
Mayo**

**\$3.99**  
Ea.



USDA  
**Boneless  
Chicken Breast**

**\$1.99**  
Lb.



USDA Fresh  
**Chicken  
Wings**

**\$1.99**  
Lb.



USDA 3-Slab Pack  
**Small Pork  
Spareribs**

**\$2.19**  
Lb.



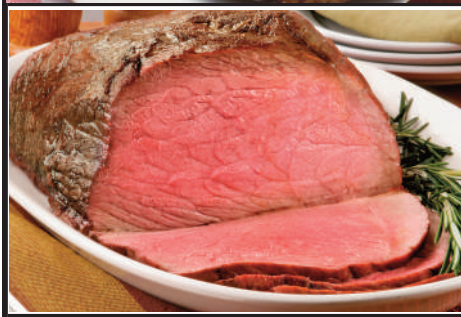
15-Oz. Pkg.  
**Ball Park  
Franks**

**2\$5**  
For



**Blackwell Angus  
Boneless Beef  
Ribeye Steak**

**\$12.99**  
Lb.



**Blackwell Angus  
Boneless Beef  
Sirloin Tip Roast**

**\$5.99**  
Lb.



**Cook's  
Shank Portion  
Smoked Ham**

**\$1.89**  
Lb.  
Butt Portion...Lb. \$1.99



USDA Fresh Hormel  
**Boston Butt  
Pork Roast**

**\$1.69**  
Lb.



USDA Fresh Sanderson Farms  
**Chicken Breast  
Tenders**

**\$3.49**  
Lb.



USDA Fresh  
**Pork Steak Or  
Country Style Rib**

**\$1.99**  
Lb.



8-Lb. Bag  
**Russet  
Potatoes**  
**\$3.69**  
Ea.



1-Lb. California  
**Fresh  
Strawberries**  
**3/\$10**



California  
**Fresh Crisp  
Lettuce**  
**\$1.99**  
Head



Red/Yellow/Orange  
**Fresh Crisp  
Bell Peppers**  
**\$1.89**  
Ea.



3-Lb. Bag  
**B-Gold  
Potatoes**.....Ea. **\$1.99**



8-Oz. Bag  
**Dole Shredded  
Lettuce**.....Ea. **\$1.99**

**Store Hours:**  
Monday - Saturday  
5:00 AM - 8:00 PM  
Sunday 7:00 - 8:00 PM

# Dorsey Food Mart

To View Our Ad Anytime Visit  
[www.dorseyfoodmart.com](http://www.dorseyfoodmart.com)

Watch for In-Store Red Tag Specials!

- Fresh Hot Biscuits Cooked Daily
- Fried Chicken Cooked Several Times Daily

- Farm Fresh Produce
- Fresh Meat Cut Daily at Store
- Call Us For Your Party Platters

We Gladly Accept Food Stamps!

3130 Highway 178  
Fulton, MS (Dorsey Community) • 862-3851

Prices Effective Tuesday, March 31, 2026 Thru Thursday, April 9, 2026.  
Quantity Rights Reserved. None Sold To Dealers. We Reserve The Right To Correct Printing Errors.

## From Our Deli! Made Fresh & Homemade Daily



**Fully Cooked  
Smoked Pulled  
Pork BBQ**

**\$7.99**  
Lb.



**Fully Cooked  
Smoked Whole Per Slab  
St. Louis Style Pork Ribs**

**\$19.99**  
Per Slab  
Per Half Slab \$10.99



Baked Beans...\$8.99 Qt.  
Potato Salad....\$8.99 Qt.  
Cole Slaw.....\$6.99 Qt.



17.5-18 Oz. Assorted  
**Kraft  
BBQ Sauce**

**2/\$4**



12-Lb. Match Light Or 16-Lb. Original  
**Kingsford  
Charcoal**

**\$9.99**  
Ea.



Assorted 9.4-14 Oz. Kraft  
**Deluxe Mac & Cheese  
Or Velveeta & Shells**

**2/\$6**



•18.8-Oz. Cinnamon Toast Crunch Or  
Honey Nut Cheerios 18.6-Oz. Lucky  
Charms •18-Oz. Cheerios

**General Mills  
"Family Size"  
Cereal**  
**2/\$9**



26.8-27.5 Oz. Original Or Master Blend  
**Maxwell House  
Coffee**

**\$14.99**  
Ea.



11-Oz. Box Nabisco  
**Nilla  
Wafers**

**2/\$7**



**Glory**

27 Oz. •Mixed Greens  
•Turnip Greens •Collard  
Greens •Mustard Greens  
•Seasoned Green Beans

**2/\$5**



Assorted 12-Oz.  
**Spam  
Lunch Meat**

**\$3.89**  
Ea.

48-Oz. Assorted  
**Prairie Farms  
Ice Cream**



**\$3.99**  
Each

Assorted 20-32 Oz.  
**Ore-Ida  
Potatoes**



**\$4.29**  
Each

8-Oz. Reg., Lite, Extra Creamy Or Zero Sugar  
**Cool Whip  
Topping**



**2/\$5**

16-Oz. Chub Fried Or 20-Oz. Chub White Or Yellow  
**McKenzie's  
Cream Corn**



**\$1.79**  
Each

Assorted 20-Oz.  
**Simply Hashbrowns  
Or Diced Potatoes**



**\$2.99**  
Each

16-Oz. Original Or Light  
**Daisy  
Sour Cream**



**2/\$5**

2-Lb. Loaf Original Or Queso  
**Kraft Velveeta  
Cheese Loaf**



**\$7.99**  
Each

Assorted 8-Ct./8-13-Oz.  
**Pillsbury Sweet Or  
Crescent Rolls**



**2/\$5**